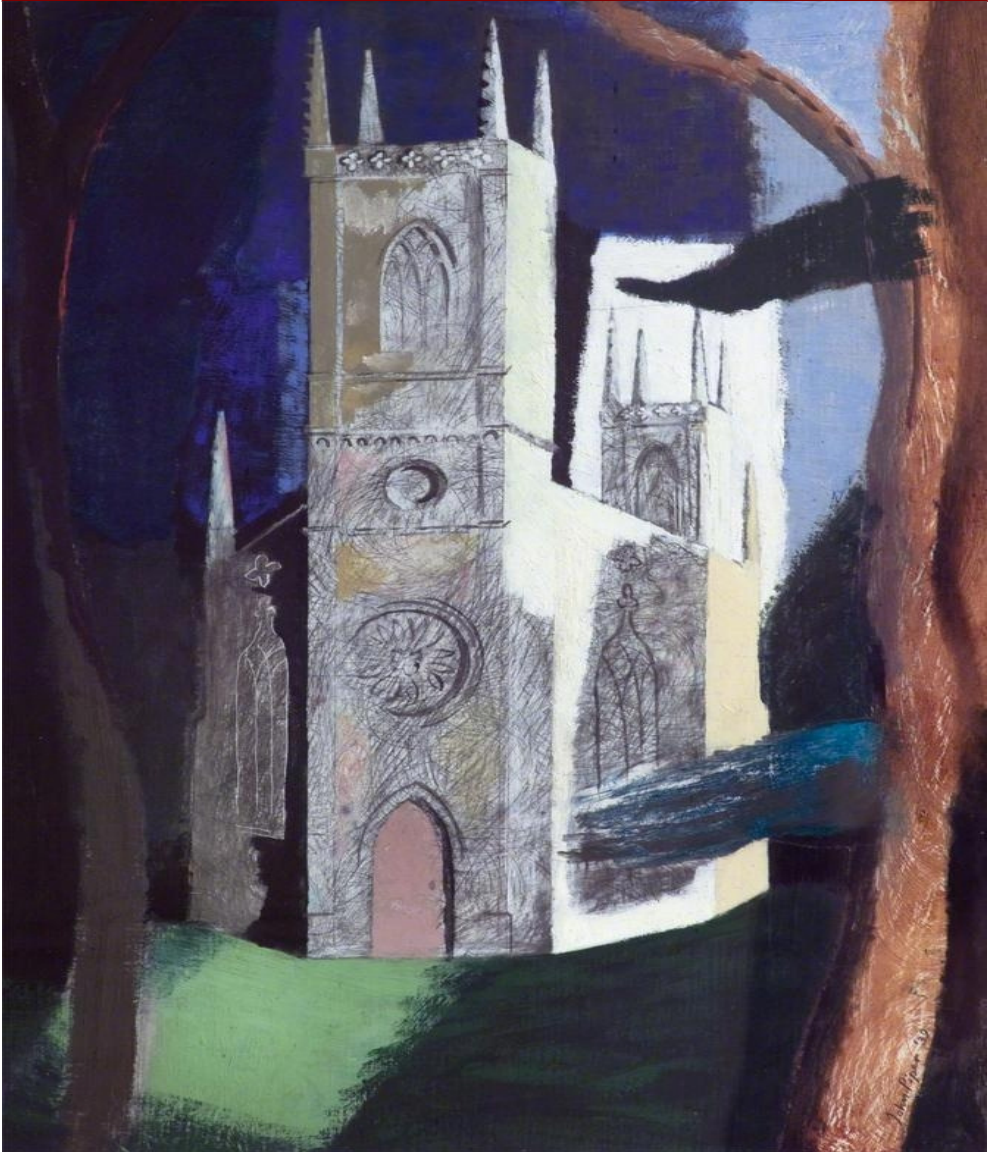


Dorchester Abbey
Education



John Piper and the Church
Schools' Art Exhibition Programme
21st April to 10th June 2012



John Piper and the Church

21st April to 10th June 2012

This special exhibition, created in honour of the Queen's Diamond Jubilee, celebrates the work of an important British artist, John Piper (1903-92), spanning from the early 1920s, his modernist interests, through to his later work. This exhibition represents an excellent 'once in a lifetime' opportunity to see works from a number of public galleries and museums throughout Britain, as well as many rarely seen examples from private collections. This educational programme seeks to explore Piper's work, interests, and the variety of techniques, media and approaches he adopted throughout his artistic career. There are many activities on offer to and adaptable for Key Stage 1-5 pupils linked to the National Curriculum, GCSE and A level programmes. The available sessions aim to encourage students to engage aesthetically, historically and practically with the exhibition displays, the work of John Piper and Dorchester Abbey. We can also create bespoke visits and/or sessions at no additional cost.

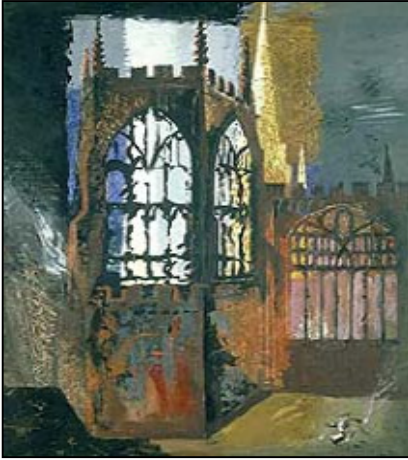
- **Art and design:** Developing Breadth of Study: investigating an artist, a range of artistic techniques, contexts, and source material. Excellent for A level art, design and textiles students.
- **History:** Britain since the 1930s: considering the changes since the 1930s; the impact of WWII; the Abbey also covers the period of the Anglo-Saxons to present day.
- **Geography:** Thinking About Landscape: investigating the natural and man-made landscapes.
- **English:** Creative writing responses, speaking and listening skills: developing these skills within a range of available activities including storytelling and drama.
- **Mathematics:** Shape, Space and Measure: integrated investigations linked to Art and Design activities, including patterns and tessellation.
- **R.E.:** Sacred Places, Symbols, and Expressions of Spirituality: the relevance and symbolism of churches in the distant and recent past.

John Piper Education Packs: These are available to teachers who attend the INSET or book a school visit.

Teachers' INSET: Monday 23rd April 1.30pm,
please contact us to reserve a place

John Piper and the Church

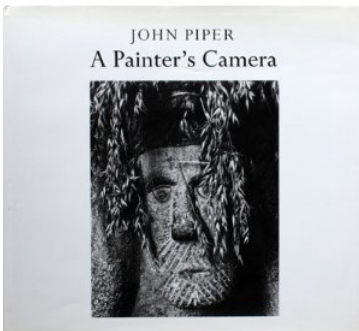
21st April to 10th June 2012



John Piper *Coventry Cathedral*,
15th November 1940

● Every Picture Tells a Story ●

This activity looks at some of the stories behind a selection of John Piper's church pictures. We will also examine the range of styles he developed and used. Students will learn how some of these images came about and a number of interesting facts about the buildings he depicted. We will also compare these to 'pictures' in the Abbey. Students will be able to create their own artworks using a range of approaches, based either upon Piper's images and/or developed through their study of the Abbey.



Front cover of the book
A Painter's Camera by John Piper

● 'A Painter's Camera': Photography, Art and the Abbey ●

Piper produced a book entitled *A Painter's Camera* and this activity draws its inspiration from it and the works in the exhibition. Participants will be introduced to the 'artist's eye' Piper brought to his photography. They will then be encouraged to respond to the provided photographs of the Abbey or to take their own. The possibility of up-loading works to an on-line web gallery is also envisioned (subject to availability).

All workshops can be adapted to your particular curriculum and syllabus requirements

John Piper and the Church

21st April to 10th June 2012



John Piper, *Nativity Window*,
1982, Magdalen College



John Piper, *Monument, Boxted*,
1947, *Stones and Bones*

Design Your Own Stained Glass Window

John Piper didn't only paint and draw but he also designed many other things including stained glass and vestments. On display will be the very first trial panel of stained glass made to Piper's design by Patrick Reyntiens. We will have an opportunity to look at some of Piper's designs, some of which will be linked to ones in the local area that students/teachers can visit at another time. We will then examine the range of the Abbey's stained glass, considering its history and timescale; participants will have the opportunity to design their own windows using a variety of techniques and approaches.

'Stones and Bones'

This is the title of a portfolio of work by John Piper representing the broad range of artistic techniques he employed and incorporating both architectural subject matter and figurative work. This activity encourages participants to respond to the architectural 'stones' of the Abbey and the 'bones' of sculptural figures in the Abbey or (on request) a model (clothed). As well as examining the techniques used in the exhibition, participants can experiment with a range of Piper's methodologies used in the series, such as collage, printmaking, photographs and drawing.

Workshops available for KS 1-5

John Piper and the Church

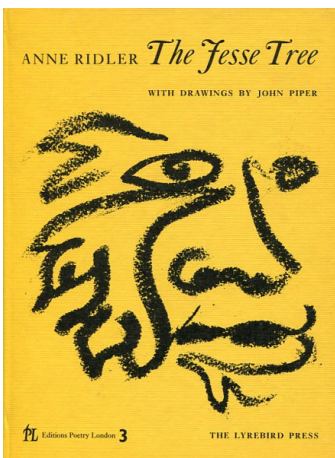
21st April to 10th June 2012



John Piper, *Dorchester Abbey*, 1973

Examining Architecture

John Piper recorded in paint and photographs representations of many buildings, especially churches, as seen in the exhibition, but he was also very passionate about their various architectural details. This activity aims to introduce participants to the language of architecture using the range of images in the exhibition and through close study of the Abbey and Cloister Gallery architectural display. Participants will be encouraged to respond in a variety of ways, perhaps with the aim of creating a group frieze inspired by church facades, architectural details and motifs.



The Jesse Tree, written by Anne Ridler and illustrated by John Piper

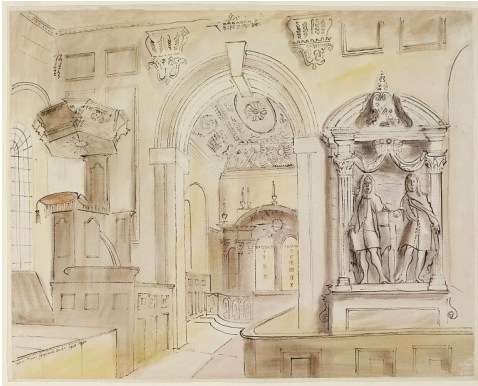
Atmospheric Storytelling: Make a book

This activity links into creative language through storytelling, drama and writing. Piper had been involved with both illustrating a dramatic poem about our sculpted and stained glass window Jesse Tree and he provided the set for the dramatic interpretation of it in 1970. Participants will be able to examine the Jesse Tree window, hear its story linked to Piper's work and be inspired by other objects in the Abbey or exhibition. Participants will then be able create and illustrate their own mini-books and include their own story within it. Or if preferred consider developing their own dramatic response to present to the group.

All workshops can be adapted to your particular curriculum and syllabus requirements

John Piper and the Church

21st April to 10th June 2012



John Piper, *St Peter's Church (interior), Gayhurst, 1940*



Entrance to the *Dorchester Museum*, with *Dorchester Abbey* just behind

● ‘Recording Dorchester’ ●

This session is based on John Piper’s WWII *Recording Britain* work from 1939, but we use this as the basis to focus on the Abbey and the Dorchester area. Participants will be introduced to the variety of Piper’s responses to the project and the motivation behind it. They will be encouraged to consider a variety of views of the Abbey both internally and externally. A visit to the adjacent Dorchester Museum (housed in the 14th/16th C Abbey Guest House) can be arranged, enabling students to develop their understanding of the history and context of the village of Dorchester. Participants may subsequently be able to contribute to a large display linked to ‘Recording the Abbey’ and possibly to upload work on-line (subject to availability). Teachers can use this visit to develop later follow up work by extending it to your own local school/home area or the broader Oxfordshire/ Buckinghamshire area where Piper lived from 1935.

Workshops available for KS 1-5

John Piper and the Church

21st April to 10th June 2012



John Piper, *Llan-y-Blodwell, Shropshire*, 1964



John Piper, *Chasuble for Chichester Cathedral*, 1967

‘Big Draw’ Event

This event will largely be a drawing and art related activity aimed at offering pupils the opportunity to engage with the art of John Piper within the context of Dorchester Abbey. Students will learn about Piper’s love of architecture, particularly churches, and see how this was made manifest in his many representations. This will enable participants to be introduced to the language of architecture through our study of images in the exhibition and throughout the Abbey and Cloister Gallery architectural display. Students will then have the opportunity to experiment with a range of approaches and media, enabling them to explore aspects such as ‘Mark Making’ and ‘Colour and Line’. There is the possibility, if desired, in creating a large-scale mock-up of the Abbey from participants’ contributions, or ‘mapping out’ their location in the Abbey.

Piper and Textiles: Cope Design

John Piper produced designs throughout his career for church vestments, including chasubles and copes for a number of cathedrals. Students will have an opportunity to study and be inspired by these designs, creating their own design if desired. Art and textile students can also explore this through an examination of the Abbey’s own recently commissioned and designed vestments and altar frontals by artist Helyne Jennings, thus enabling them to examine and engage with a range of ‘modern’ and contemporary experimental art and textile techniques.

All workshops can be adapted to your particular curriculum and syllabus requirements

John Piper and the Church

21st April to 10th June 2012



John Piper, *Ceramic Dish with Foliate Head*,
Black, Grey Blue, 1978

Booking an Educational Visit
We have limited availability for school visits during the exhibition period, thus early booking is advisable. **Please contact us now to check availability.** Please note that we can adapt any of these sessions to meet your own particular curriculum requirements or develop a bespoke programme for your school group at no additional charge, just indicate your needs when you contact us.

Contact Details: For further details, to check availability, reserve a place on the Teachers' INSET or to make a booking please contact the Education Officer, Margaret Craig via email education@dorchester-abbey.org.uk or telephone 01865 343164. Please also visit our website for further information and background on what the Abbey has to offer:

www.dorchester-abbey.org.uk

Further Information:

There will be a catalogue to accompany this exhibition available for purchase at the exhibition or INSET session. The INSET session will also provide an Education Pack with images and notes on some of the works in the exhibition. It will also provide you with potential angles of enquiry, enabling you to question and explore the works and context further.

Dorchester Abbey Education website:

www.dorchester-abbey.org.uk/education.htm

You may also like to visit the website devoted to the *John Piper and the Church* exhibition: www.johnpiperandthechurch.co.uk

Teachers' INSET

Monday 23rd April 2012

With Joanna Cartwright of Bohun Gallery

1.30pm